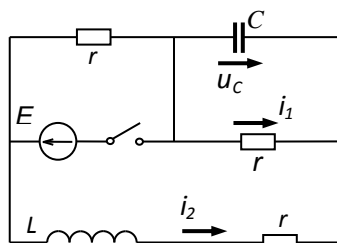
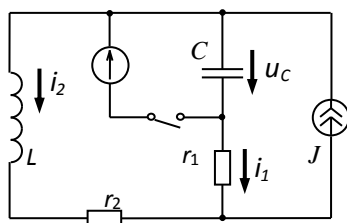


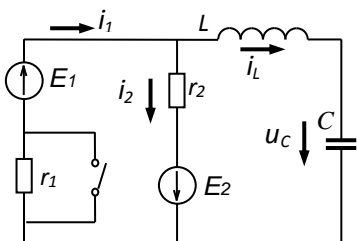
1	E	r	r_1	L	C
	100	50	50	$5 \cdot 10^{-2}$	$4 \cdot 10^{-5}$



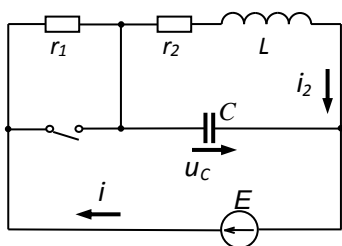
2	E	r	L	C
	100	10	$6 \cdot 10^{-3}$	10^{-5}



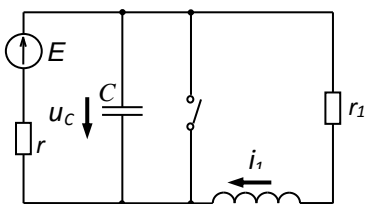
3	E	J	r_1	r_2	L	C
	60	2	30	20	0,05	$4 \cdot 10^{-5}$



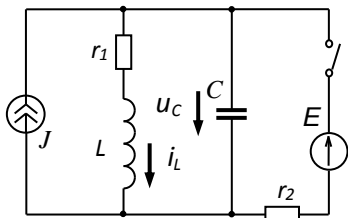
4	E_1	E_2	r_1	r_2	L	C
	30	10	20	20	0,05	$4 \cdot 10^{-4}$



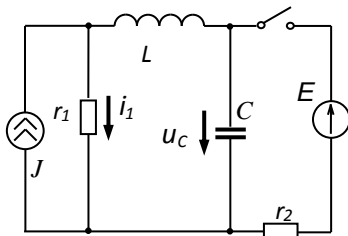
5	E	r_1	r_2	L	C
	100	10	10	$6 \cdot 10^{-3}$	10^{-5}



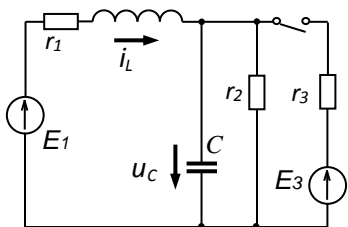
6	E	r	r_1	L	C
	40	10	10	10^{-2}	10^{-4}



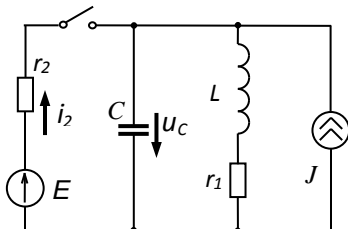
7	E	J	r_1	r_2	L	C
	250	15	10	10	0,05	$4 \cdot 10^{-4}$



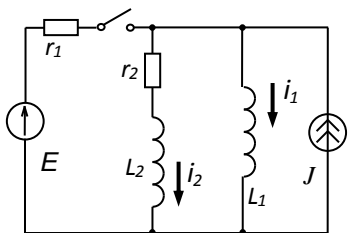
8	E	J	r_1	r_2	L	C
	24	12	10	8	0.5	$1,25 \cdot 10^{-3}$



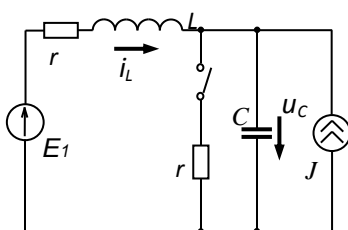
9	E_1	E_2	r_1	r_2	r_3	L	C
	90	440	10	8	40	0,5	$1,25 \cdot 10^{-3}$



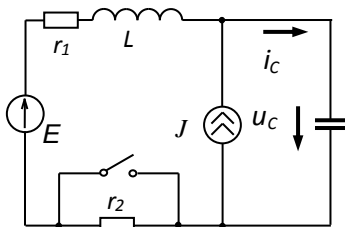
10	E	J	r_1	r_2	L	C
	180	9	10	8	0,5	$1,25 \cdot 10^{-3}$



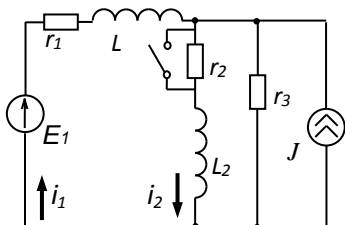
11	E	J	r_1	r_2	L_1	L_2
	60	10	4	8	0,05	0,1



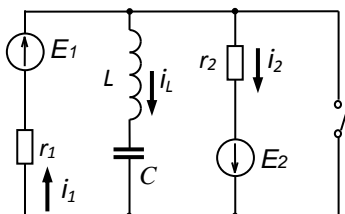
12	E	J	r	L	C
	200	5	10	0,05	$4 \cdot 10^{-4}$



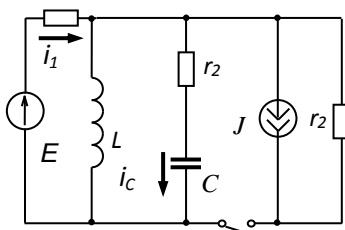
13	E	J	r_1	r_2	L	C
	50	5	10	10	0,05	$4 \cdot 10^{-4}$



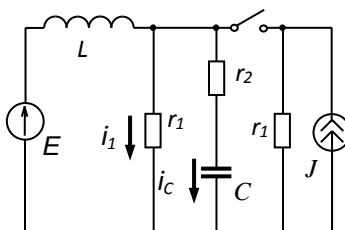
14	E	J	r_1	r_2	r_3	L_1	L_2
	240	45	8	8	4	0,1	0,05



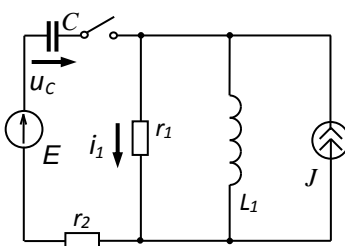
15	E_1	E_2	r_1	r_2	L	C
	150	100	20	20	$0,054 \cdot 10^{-4}$	



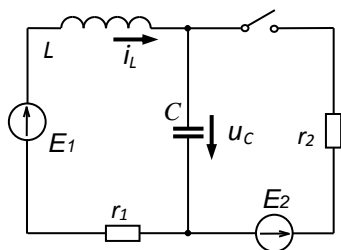
16	E	J	r_1	r_2	L	C
	200	1	50	50	0,25	10^{-4}



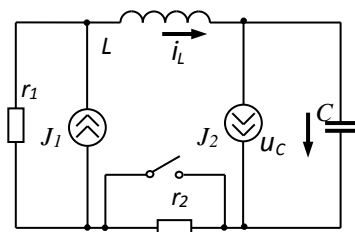
17	E	J	r_1	r_2	L	C
	200	1	100	50	0,25	10^{-4}



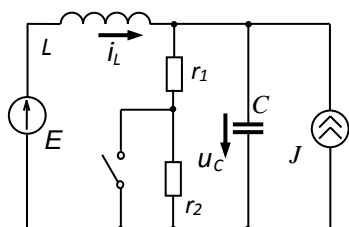
18	E	J	r_1	r_2	L	C
	200	1	50	50	0,25	10^{-4}



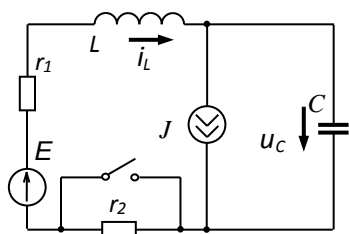
19	E_1	E_2	r_1	r_2	L	C
	24	42	10	8	0,5	$1.25 \cdot 10^{-3}$



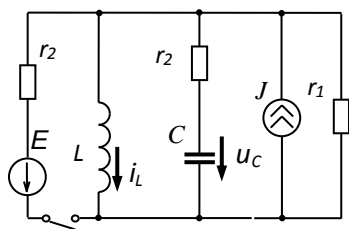
20	J_1	J_2	r_1	r_2	L	C
	5	5	10	10	0,05	$4 \cdot 10^{-4}$



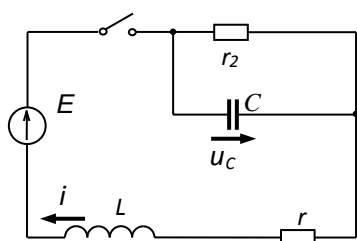
21	E	J	r_1	r_2	L	C
	200	5	25	40	0,1	$2 \cdot 10^{-4}$



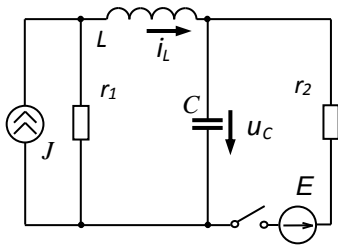
22	E	J	r_1	r_2	L	C
	90	1	50	20	$5 \cdot 10^{-2}$	$4 \cdot 10^{-5}$



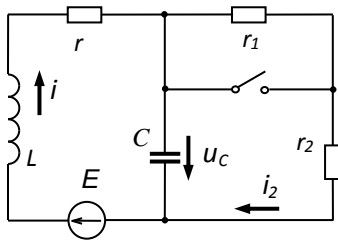
23	E	J	r_1	r_2	L	C
	50	4	50	50	0,25	10^{-4}



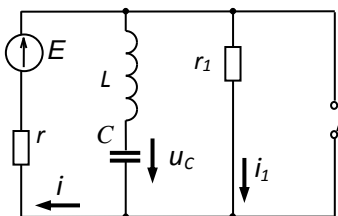
24	E	r	L	C
	40	10	$6 \cdot 10^{-3}$	10^{-5}



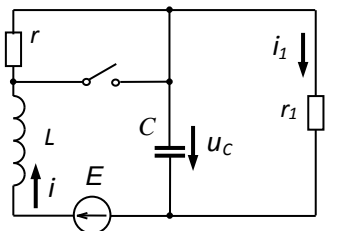
25	J	E	r_1	r_2	L	C
	2,4	42	8	42	0,5	$1.25 \cdot 10^{-3}$



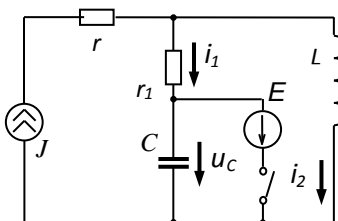
26	E	r	r_1	r_2	L	C
	100	10	10	10	$6 \cdot 10^{-3}$	10^{-5}



27	E	r	r_1	L	C
	96	1200	600	0,01	$0.25 \cdot 10^{-6}$

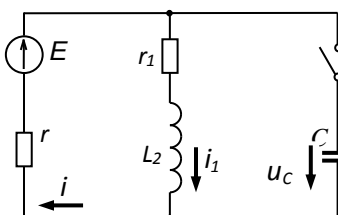


28	E	r	r_1	L	C
	50	25	25	0,4	$2 \cdot 10^{-4}$



29

29	E	J	r	r_1	L	C
	100	2	1	10	0,05	$4 \cdot 10^{-4}$



30	E	r	r_1	L	C
	100	100	100	10^{-3}	10^{-7}